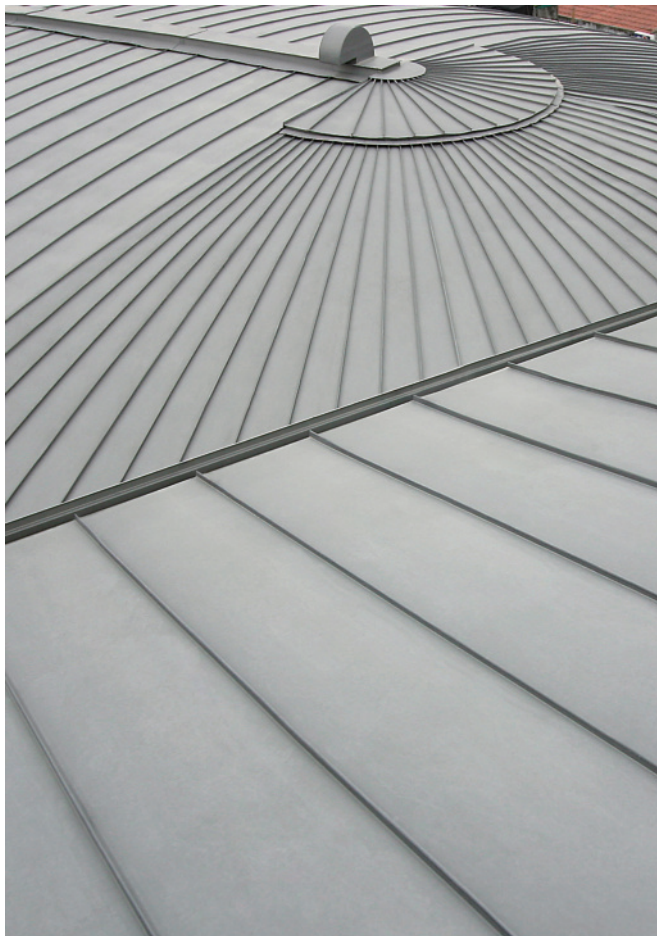


# ZINC-TITANIUM

Modern variety of metal with traditions

---





**Zinc-titanium** is a modern material produced of the highest purity zinc SHG 99,995% with additions of copper and titanium. Modern technology guarantees very good physical and mechanical properties and allows for a wide range of application in the building industry.

### Zinc-titanium advantages:

- durable for over 80 years,
- corrosion resistant,
- does not require maintenance,
- may be easily joined and formed,
- excellent for soldering,
- light and non-flammable,
- 100% recyclable.

Zinc develops a natural patina over time, influenced by the local atmospheric conditions. This patina, acts as a protective layer and consists of oxides and a basic zinc carbonate giving zinc an incredibly long, (virtually) maintenance free life. Upon exposure, a surface patina develops on the zinc, consisting of oxides and basic zinc carbonate.

**Zinc-titanium** is produced in accordance to EN988 in three different surface finishes.

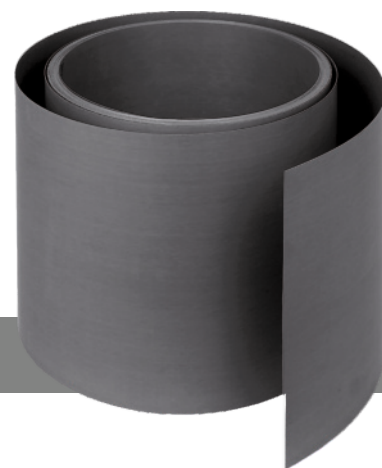
- **NATURAL** – the metallic and shining surface which will gradually turn to a natural light grey zinc patina in response to localised atmospheric conditions.
- **PRE-AGED GREY** – a matt, light grey patina surface created as a result of chemical processes. It is recommended to use pre-aged material on elements such as facades.
- **PRE-AGED CARBON** – a graphite-black surface developed using a complex technological process. The contrasting dark patina provides a distinctive identity whilst harmonising with other building materials such as slate.



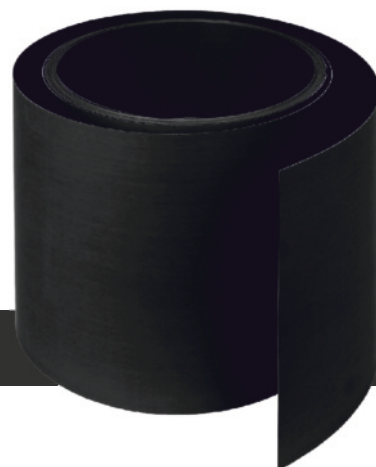
NATURAL



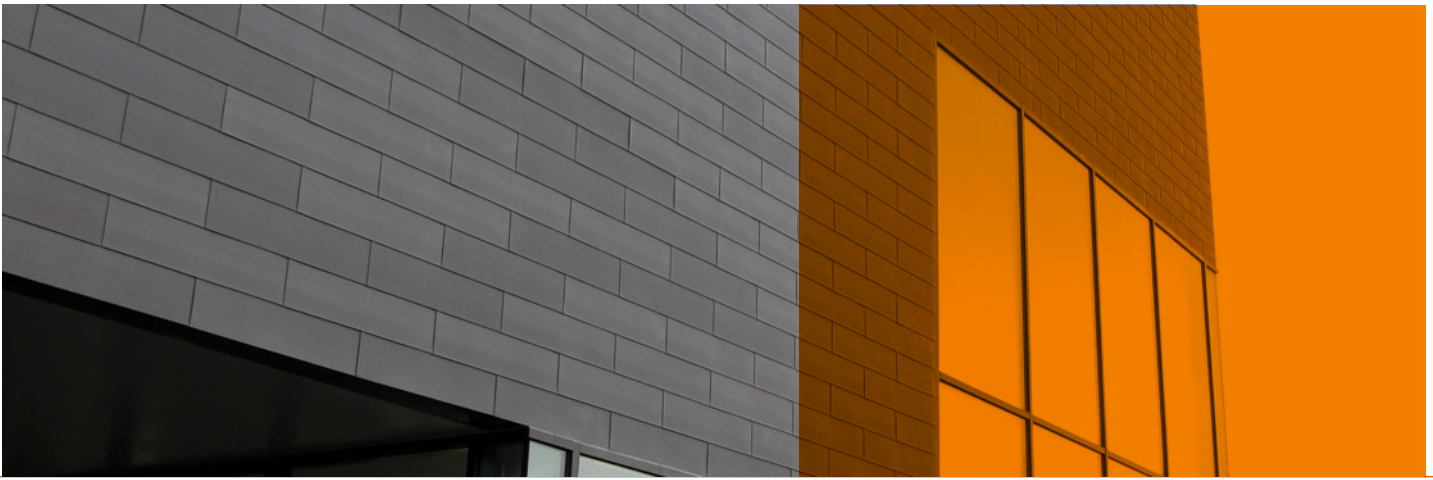
PRE-AGED GREY



PRE-AGED CARBON







## Assortment

- sheets 1000 x 2000 or 3000 mm
- coils width 100 (or less for special requirements) – 1000 mm (weight from 100 to 4700 kg)

thickness sheet/coils (mm)	weight (kg/m <sup>2</sup> )
0,55*	4,0
0,60	4,3
0,65	4,7
0,70	5,0
0,80	5,8
1,00	7,2

\* sheets only

## Application in architecture

Zinc-titanium may be used on sloping surfaces with the more than 3° inclination and with various shapes (straight, convex, concave).

### Applications:

- roof,
- façades,
- flashing,
- rainwater systems.



## Variety of applications

Due to the ease of forming and flexibility of fabrication zinc-titanium satisfies contemporary design where complex shapes and complicated detailing are required. A material capable for modern design and yet perfectly suitable for use in the renovation of historic buildings.

### Zinc-titanium is mostly applied in the followings systems:

- double standing seam or angled standing seam,
- strip,
- small-size elements (files, shingles),
- special forms: panels, cassettes, corrugated profiles.







ZM SILESIA SA  
ul. Konduktorska 8, 40-155 Katowice  
tel. +48 32 35 87 400  
fax +48 32 25 98 331  
biuro@silesiasa.pl, www.silesiasa.pl



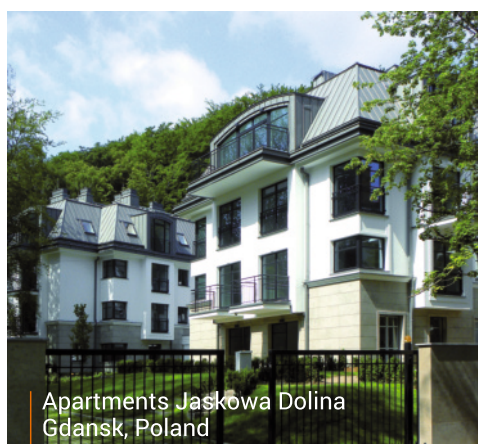
## References



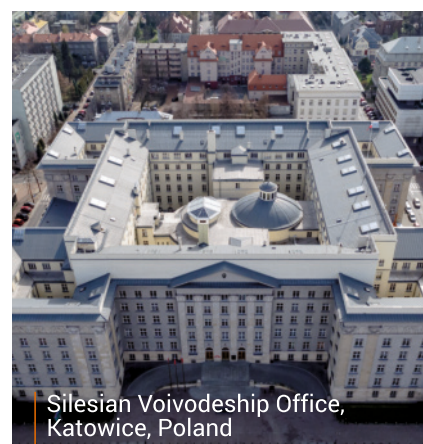
University of Rzeszow, Rzeszow, Poland



Office building, South Korea



Apartments Jaskowa Dolina  
Gdansk, Poland



Silesian Voivodeship Office,  
Katowice, Poland